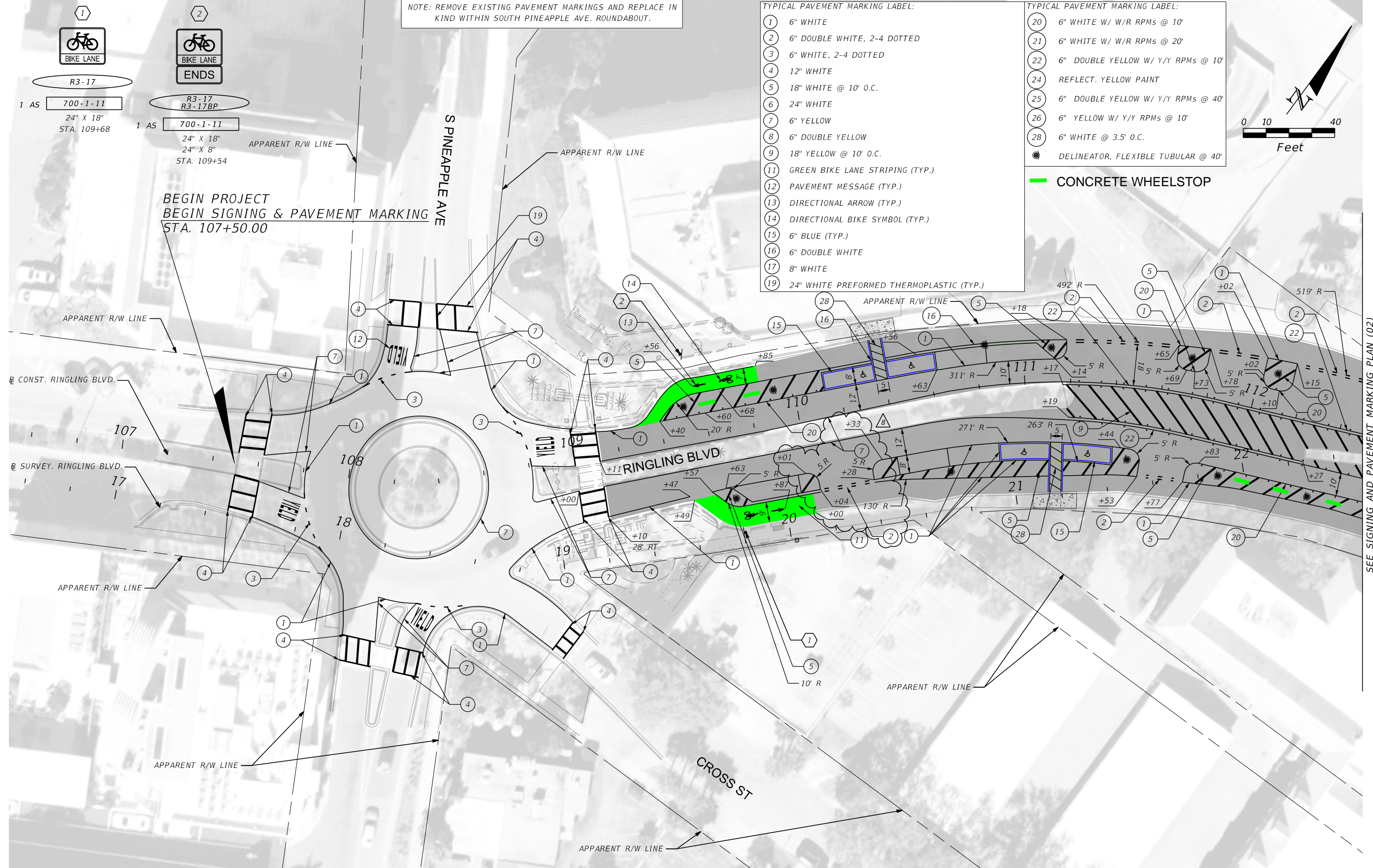
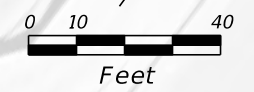


NOTE: REMOVE EXISTING PAVEMENT MARKINGS AND REPLACE IN KIND WITHIN SOUTH PINEAPPLE AVE. ROUNDABOUT.

- TYPICAL PAVEMENT MARKING LABEL:
- 1 6" WHITE
 - 2 6" DOUBLE WHITE, 2-4 DOTTED
 - 3 6" WHITE, 2-4 DOTTED
 - 4 12" WHITE
 - 5 18" WHITE @ 10' O.C.
 - 6 24" WHITE
 - 7 6" YELLOW
 - 8 6" DOUBLE YELLOW
 - 9 18" YELLOW @ 10' O.C.
 - 11 GREEN BIKE LANE STRIPING (TYP.)
 - 12 PAVEMENT MESSAGE (TYP.)
 - 13 DIRECTIONAL ARROW (TYP.)
 - 14 DIRECTIONAL BIKE SYMBOL (TYP.)
 - 15 6" BLUE (TYP.)
 - 16 6" DOUBLE WHITE
 - 17 8" WHITE
 - 19 24" WHITE PREFORMED THERMOPLASTIC (TYP.)

- TYPICAL PAVEMENT MARKING LABEL:
- 20 6" WHITE W/ W/R RPMs @ 10'
 - 21 6" WHITE W/ W/R RPMs @ 20'
 - 22 6" DOUBLE YELLOW W/ Y/Y RPMs @ 10'
 - 24 REFLECT. YELLOW PAINT
 - 25 6" DOUBLE YELLOW W/ Y/Y RPMs @ 40'
 - 26 6" YELLOW W/ Y/Y RPMs @ 10'
 - 28 6" WHITE @ 3.5' O.C.
 - DELINEATOR, FLEXIBLE TUBULAR @ 40'

CONCRETE WHEELSTOP



BEGIN PROJECT
BEGIN SIGNING & PAVEMENT MARKING
STA. 107+50.00

SEE SIGNING AND PAVEMENT MARKING PLAN (02)

REVISIONS	
DATE	DESCRIPTION
11/08/22	REVISED PARKING STRIPES

STEVEN C. BRONZELL, P.E.
P.E. LICENSE NUMBER 76425
BURGESS & NIPLE, INC.
1511 N. WESTSHORE BLVD., SUITE 500
TAMPA, FL 33607

RINGLING BOULEVARD TRAIL - DESIGN / BUILD
PO NO.: PD-221104

CITY OF	COUNTY
SARASOTA	SARASOTA

**SIGNING AND PAVEMENT
MARKING PLAN (01)**

SHEET NO.
S-3

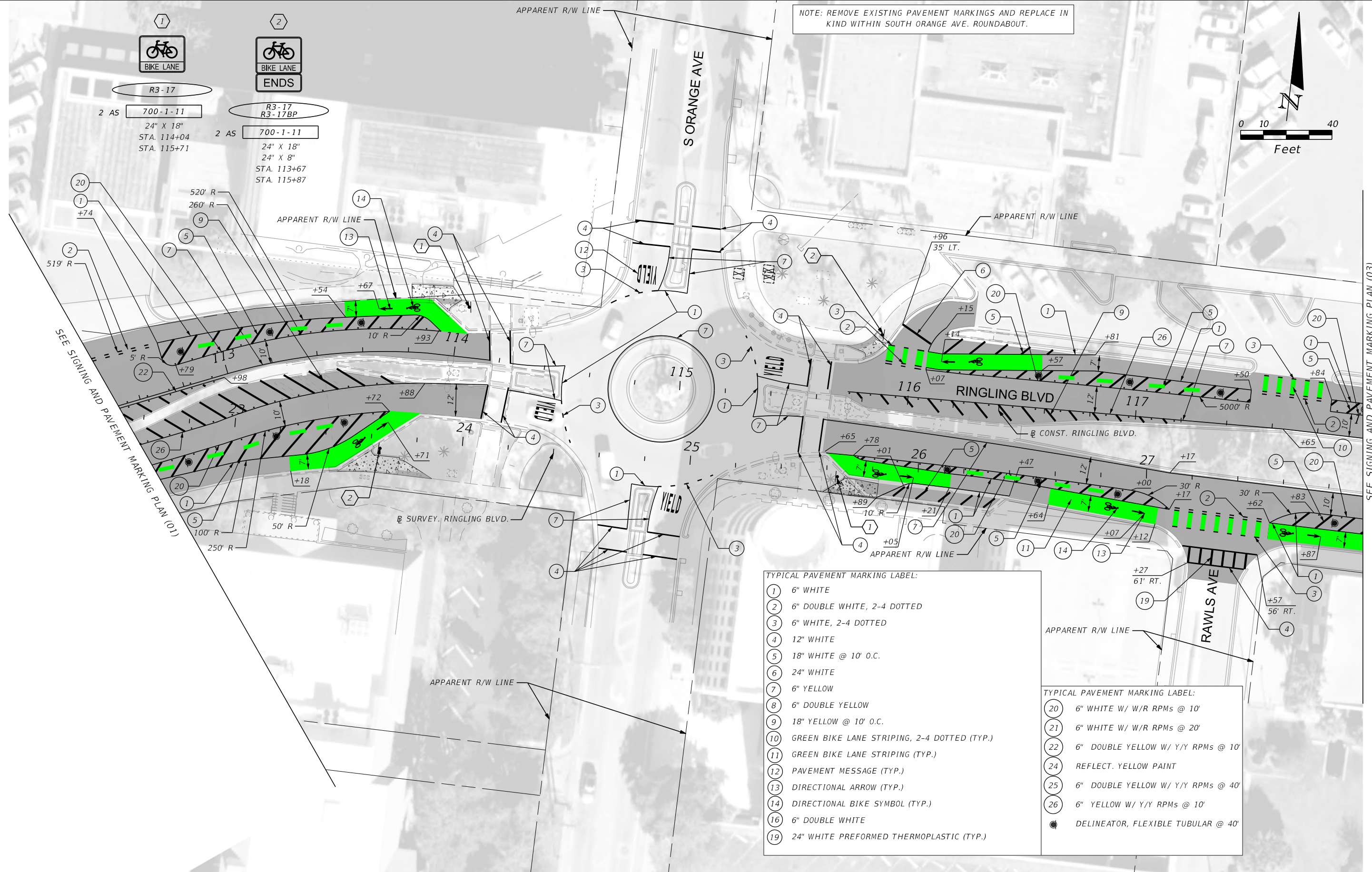
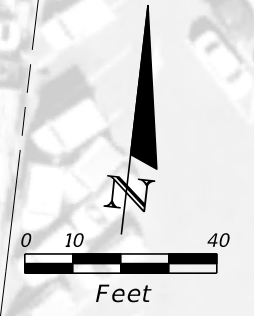
THE OFFICIAL RECORD OF THIS SHEET IS THE ELECTRONIC FILE DIGITALLY SIGNED AND SEALED UNDER RULE 61G15-23.004, F.A.C.



2 AS 700-1-11
24" X 18"
STA. 114+04
STA. 115+71

2 AS 700-1-11
R3-17
R3-17BP
24" X 18"
24" X 8"
STA. 113+67
STA. 115+87

NOTE: REMOVE EXISTING PAVEMENT MARKINGS AND REPLACE IN KIND WITHIN SOUTH ORANGE AVE. ROUNDABOUT.



- TYPICAL PAVEMENT MARKING LABEL:
- 1 6" WHITE
 - 2 6" DOUBLE WHITE, 2-4 DOTTED
 - 3 6" WHITE, 2-4 DOTTED
 - 4 12" WHITE
 - 5 18" WHITE @ 10' O.C.
 - 6 24" WHITE
 - 7 6" YELLOW
 - 8 6" DOUBLE YELLOW
 - 9 18" YELLOW @ 10' O.C.
 - 10 GREEN BIKE LANE STRIPING, 2-4 DOTTED (TYP.)
 - 11 GREEN BIKE LANE STRIPING (TYP.)
 - 12 PAVEMENT MESSAGE (TYP.)
 - 13 DIRECTIONAL ARROW (TYP.)
 - 14 DIRECTIONAL BIKE SYMBOL (TYP.)
 - 16 6" DOUBLE WHITE
 - 19 24" WHITE PREFORMED THERMOPLASTIC (TYP.)

- TYPICAL PAVEMENT MARKING LABEL:
- 20 6" WHITE W/ W/R RPMs @ 10'
 - 21 6" WHITE W/ W/R RPMs @ 20'
 - 22 6" DOUBLE YELLOW W/ Y/Y RPMs @ 10'
 - 24 REFLECT. YELLOW PAINT
 - 25 6" DOUBLE YELLOW W/ Y/Y RPMs @ 40'
 - 26 6" YELLOW W/ Y/Y RPMs @ 10'
 - DELINEATOR, FLEXIBLE TUBULAR @ 40'

REVISIONS			
DATE	DESCRIPTION	DATE	DESCRIPTION

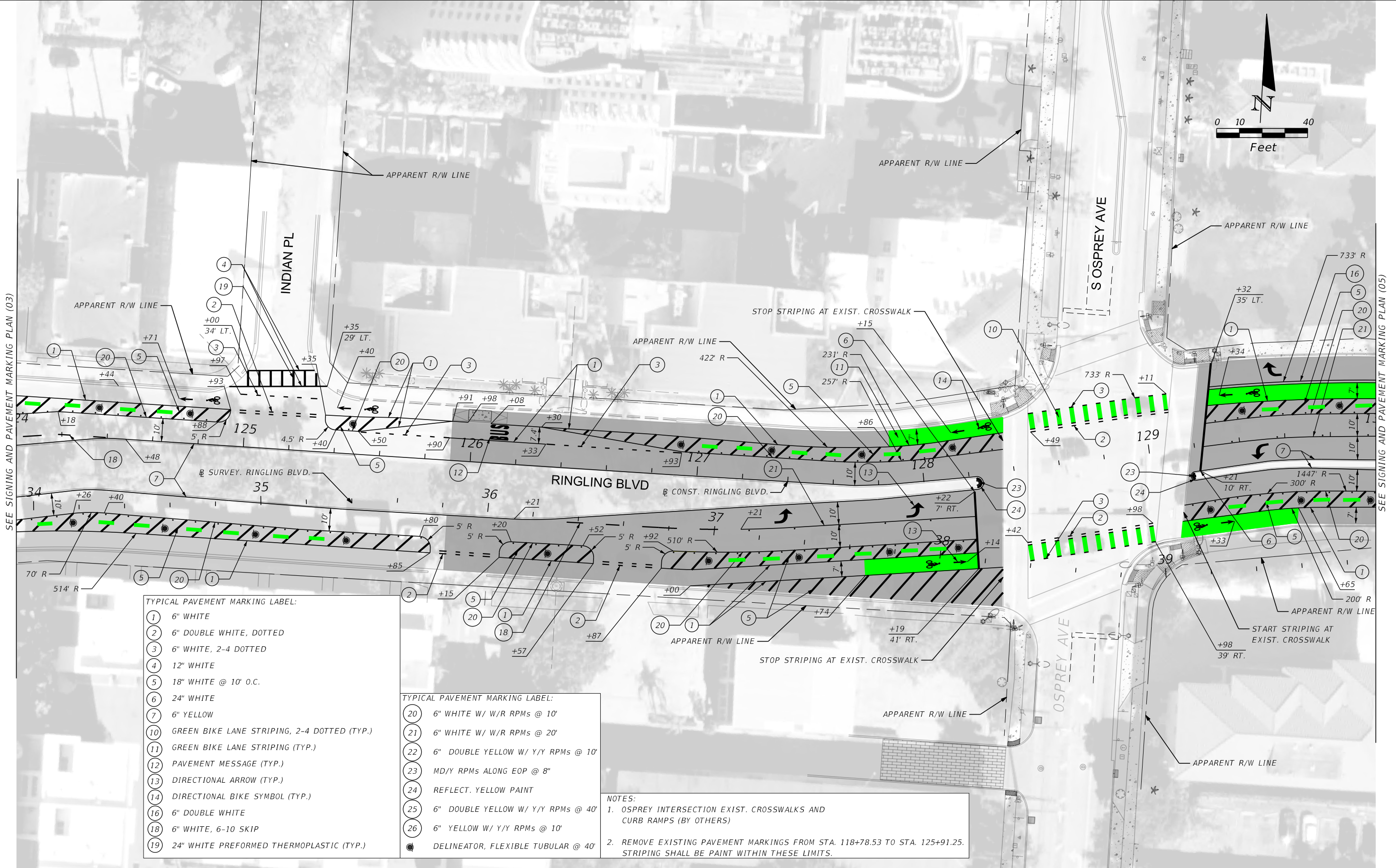
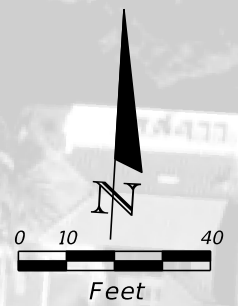
STEVEN C. BRONZELL, P.E.
P.E. LICENSE NUMBER 76425
BURGESS & NIPLE, INC.
1511 N. WESTSHORE BLVD., SUITE 500
TAMPA, FL 33607

RINGLING BOULEVARD TRAIL - DESIGN / BUILD
PO NO.: PD-221104

CITY OF	COUNTY
SARASOTA	SARASOTA

SIGNING AND PAVEMENT MARKING PLAN (02)

SHEET NO.
S-4



SEE SIGNING AND PAVEMENT MARKING PLAN (03)

SEE SIGNING AND PAVEMENT MARKING PLAN (05)

- TYPICAL PAVEMENT MARKING LABEL:**
- ① 6" WHITE
 - ② 6" DOUBLE WHITE, DOTTED
 - ③ 6" WHITE, 2-4 DOTTED
 - ④ 12" WHITE
 - ⑤ 18" WHITE @ 10' O.C.
 - ⑥ 24" WHITE
 - ⑦ 6" YELLOW
 - ⑩ GREEN BIKE LANE STRIPING, 2-4 DOTTED (TYP.)
 - ⑪ GREEN BIKE LANE STRIPING (TYP.)
 - ⑫ PAVEMENT MESSAGE (TYP.)
 - ⑬ DIRECTIONAL ARROW (TYP.)
 - ⑭ DIRECTIONAL BIKE SYMBOL (TYP.)
 - ⑯ 6" DOUBLE WHITE
 - ⑰ 6" WHITE, 6-10 SKIP
 - ⑱ 24" WHITE PREFORMED THERMOPLASTIC (TYP.)

- TYPICAL PAVEMENT MARKING LABEL:**
- ⑳ 6" WHITE W/ W/R RPMs @ 10'
 - ㉑ 6" WHITE W/ W/R RPMs @ 20'
 - ㉒ 6" DOUBLE YELLOW W/ Y/Y RPMs @ 10'
 - ㉓ MD/Y RPMs ALONG EOP @ 8"
 - ㉔ REFLECT. YELLOW PAINT
 - ㉕ 6" DOUBLE YELLOW W/ Y/Y RPMs @ 40'
 - ㉖ 6" YELLOW W/ Y/Y RPMs @ 10'
 - DELINEATOR, FLEXIBLE TUBULAR @ 40'

NOTES:

1. OSPREY INTERSECTION EXIST. CROSSWALKS AND CURB RAMPS (BY OTHERS)
2. REMOVE EXISTING PAVEMENT MARKINGS FROM STA. 118+78.53 TO STA. 125+91.25. STRIPING SHALL BE PAINT WITHIN THESE LIMITS.

REVISIONS			
DATE	DESCRIPTION	DATE	DESCRIPTION

STEVEN C. BRONZELL, P.E.
 P.E. LICENSE NUMBER 76425
 BURGESS & NIPLE, INC.
 1511 N. WESTSHORE BLVD., SUITE 500
 TAMPA, FL 33607

RINGLING BOULEVARD TRAIL - DESIGN / BUILD
 PO NO.: PD-221104

CITY OF	COUNTY
SARASOTA	SARASOTA

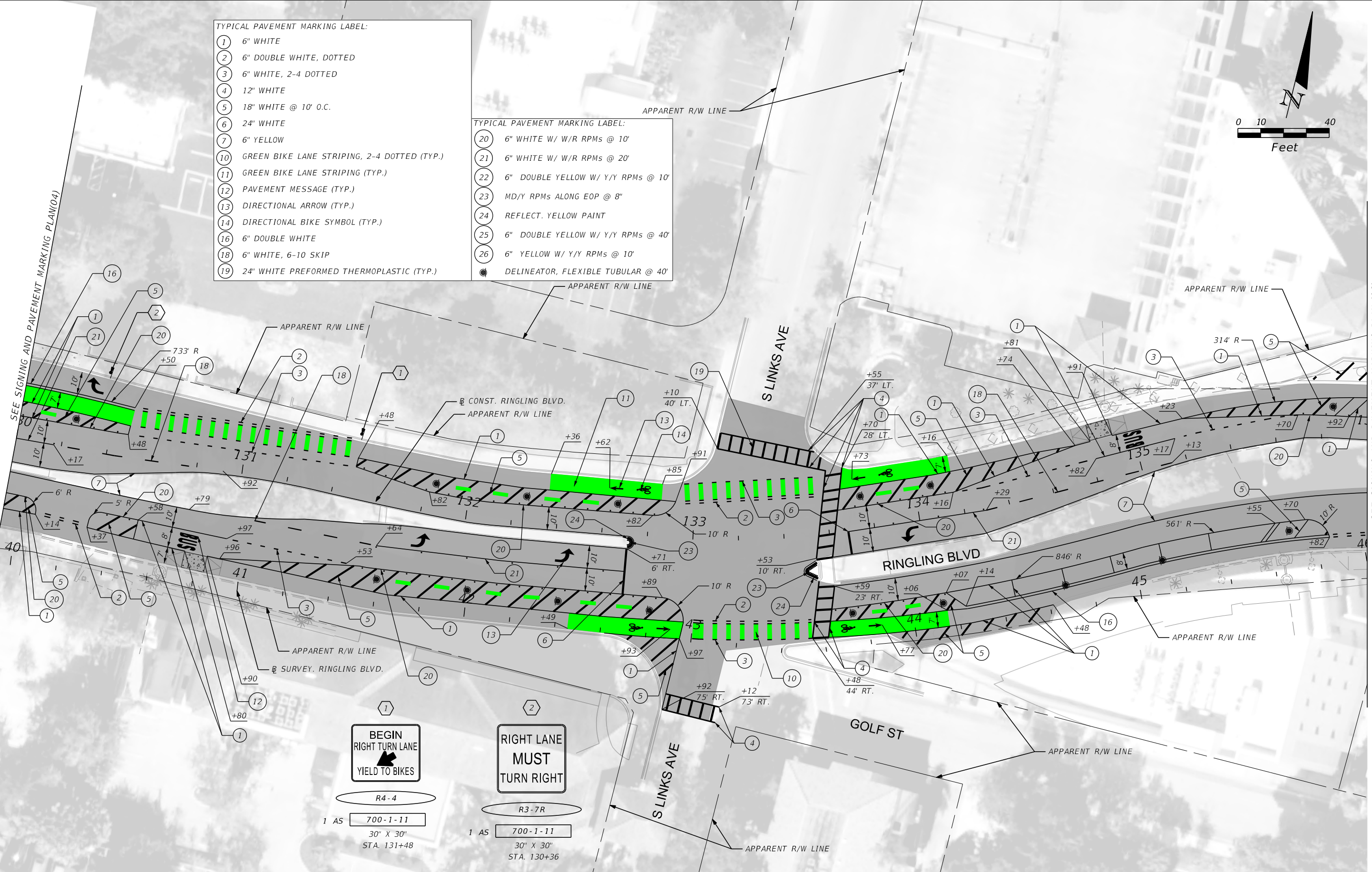
**SIGNING AND PAVEMENT
 MARKING PLAN (04)**

SHEET
 NO.
 S-6

THE OFFICIAL RECORD OF THIS SHEET IS THE ELECTRONIC FILE DIGITALLY SIGNED AND SEALED UNDER RULE 61G15-23.004, F.A.C.

- TYPICAL PAVEMENT MARKING LABEL:
- 1 6" WHITE
 - 2 6" DOUBLE WHITE, DOTTED
 - 3 6" WHITE, 2-4 DOTTED
 - 4 12" WHITE
 - 5 18" WHITE @ 10' O.C.
 - 6 24" WHITE
 - 7 6" YELLOW
 - 10 GREEN BIKE LANE STRIPING, 2-4 DOTTED (TYP.)
 - 11 GREEN BIKE LANE STRIPING (TYP.)
 - 12 PAVEMENT MESSAGE (TYP.)
 - 13 DIRECTIONAL ARROW (TYP.)
 - 14 DIRECTIONAL BIKE SYMBOL (TYP.)
 - 16 6" DOUBLE WHITE
 - 18 6" WHITE, 6-10 SKIP
 - 19 24" WHITE PREFORMED THERMOPLASTIC (TYP.)

- TYPICAL PAVEMENT MARKING LABEL:
- 20 6" WHITE W/ W/R RPMs @ 10'
 - 21 6" WHITE W/ W/R RPMs @ 20'
 - 22 6" DOUBLE YELLOW W/ Y/Y RPMs @ 10'
 - 23 MD/Y RPMs ALONG EOP @ 8"
 - 24 REFLECT. YELLOW PAINT
 - 25 6" DOUBLE YELLOW W/ Y/Y RPMs @ 40'
 - 26 6" YELLOW W/ Y/Y RPMs @ 10'
 - DELINEATOR, FLEXIBLE TUBULAR @ 40'



**BEGIN
RIGHT TURN LANE
YIELD TO BIKES**

R4-4
1 AS 700-1-11
30" X 30"
STA. 131+48

**RIGHT LANE
MUST
TURN RIGHT**

R3-7R
1 AS 700-1-11
30" X 30"
STA. 130+36

REVISIONS			
DATE	DESCRIPTION	DATE	DESCRIPTION

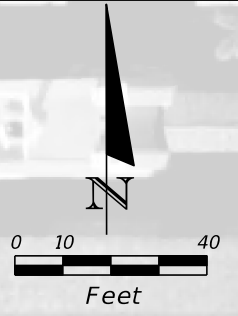
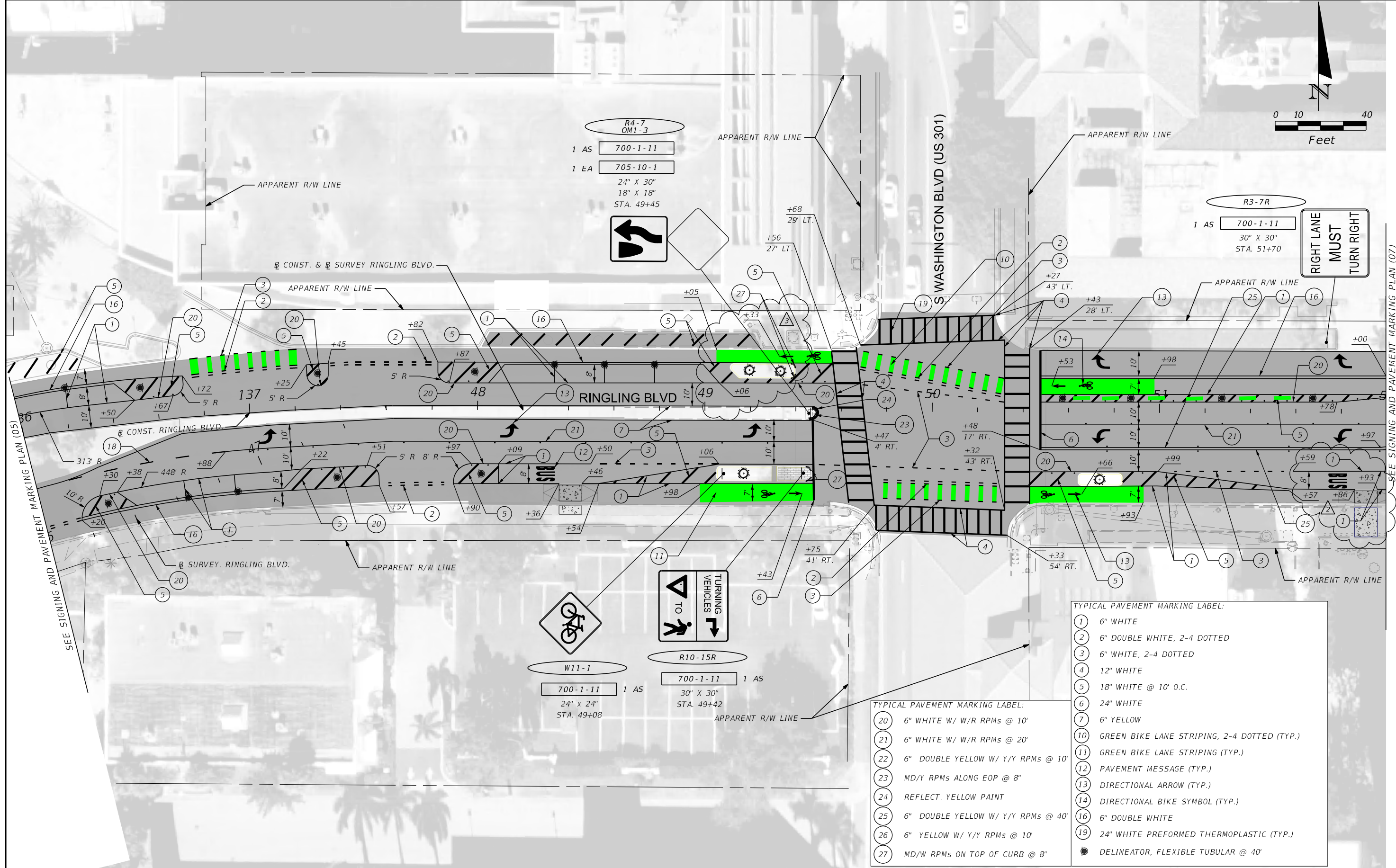
STEVEN C. BRONZELL, P.E.
P.E. LICENSE NUMBER 76425
BURGESS & NIPLE, INC.
1511 N. WESTSHORE BLVD., SUITE 500
TAMPA, FL 33607

RINGLING BOULEVARD TRAIL - DESIGN / BUILD PO NO.: PD-221104	
CITY OF	COUNTY
SARASOTA	SARASOTA

**SIGNING AND PAVEMENT
MARKING PLAN (05)**

SHEET NO.
S-7

THE OFFICIAL RECORD OF THIS SHEET IS THE ELECTRONIC FILE DIGITALLY SIGNED AND SEALED UNDER RULE 61G15-23.004, F.A.C.



R4-7
OM1-3

1 AS 700-1-11
1 EA 705-10-1
24" X 30"
18" X 18"
STA. 49+45

R3-7R

1 AS 700-1-11
30" X 30"
STA. 51+70

W11-1

700-1-11 1 AS
24" x 24"
STA. 49+08

R10-15R

700-1-11 1 AS
30" X 30"
STA. 49+42

- TYPICAL PAVEMENT MARKING LABEL:
- 1 6" WHITE
 - 2 6" DOUBLE WHITE, 2-4 DOTTED
 - 3 6" WHITE, 2-4 DOTTED
 - 4 12" WHITE
 - 5 18" WHITE @ 10' O.C.
 - 6 24" WHITE
 - 7 6" YELLOW
 - 10 GREEN BIKE LANE STRIPING, 2-4 DOTTED (TYP.)
 - 11 GREEN BIKE LANE STRIPING (TYP.)
 - 12 PAVEMENT MESSAGE (TYP.)
 - 13 DIRECTIONAL ARROW (TYP.)
 - 14 DIRECTIONAL BIKE SYMBOL (TYP.)
 - 16 6" DOUBLE WHITE
 - 19 24" WHITE PREFORMED THERMOPLASTIC (TYP.)
 - DELINEATOR, FLEXIBLE TUBULAR @ 40'

- TYPICAL PAVEMENT MARKING LABEL:
- 20 6" WHITE W/ W/R RPMs @ 10'
 - 21 6" WHITE W/ W/R RPMs @ 20'
 - 22 6" DOUBLE YELLOW W/ Y/Y RPMs @ 10'
 - 23 MD/Y RPMs ALONG EOP @ 8"
 - 24 REFLECT. YELLOW PAINT
 - 25 6" DOUBLE YELLOW W/ Y/Y RPMs @ 40'
 - 26 6" YELLOW W/ Y/Y RPMs @ 10'
 - 27 MD/W RPMs ON TOP OF CURB @ 8"

REVISIONS			
DATE	DESCRIPTION	DATE	DESCRIPTION
06/15/22	2 REVISED BUS ISLAND MARKINGS STA.		
06/20/22	3 REVISED NW QUADRANT LANDSCAPE ISLAND OFFSET.		

STEVEN C. BRONZELL, P.E.
P.E. LICENSE NUMBER 76425
BURGESS & NIPLE, INC.
1511 N. WESTSHORE BLVD., SUITE 500
TAMPA, FL 33607

RINGLING BOULEVARD TRAIL - DESIGN / BUILD
PO NO.: PD-221104

CITY OF	COUNTY
SARASOTA	SARASOTA

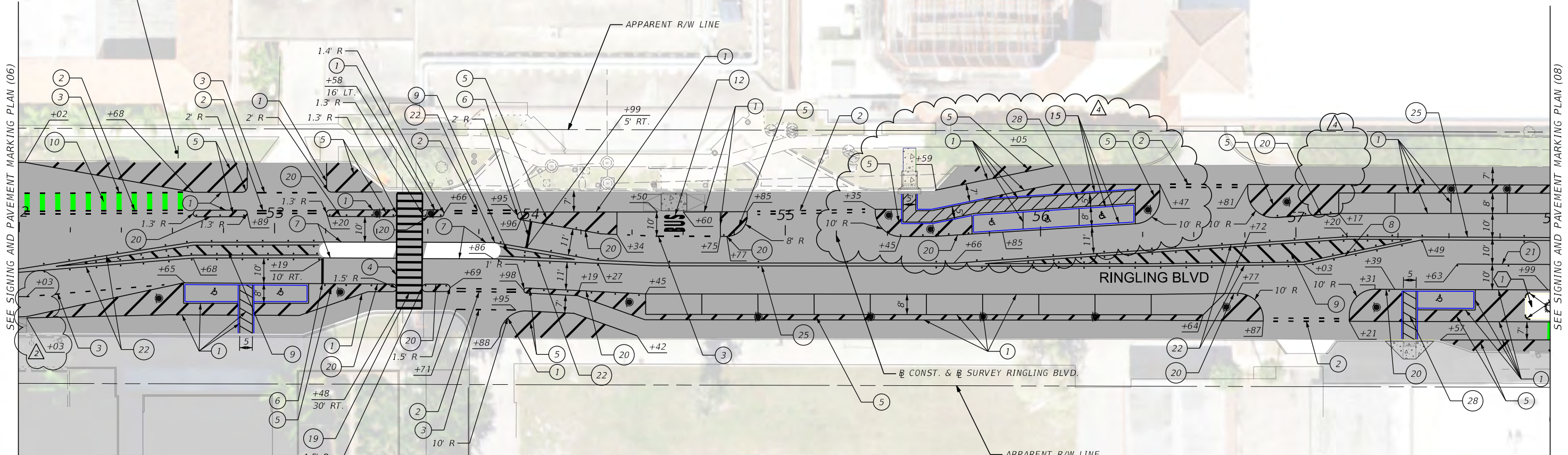
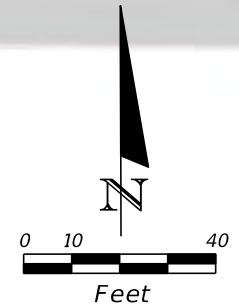
SIGNING AND PAVEMENT MARKING PLAN (06)

SHEET NO.
S-8

THE OFFICIAL RECORD OF THIS SHEET IS THE ELECTRONIC FILE DIGITALLY SIGNED AND SEALED UNDER RULE 61G15-23.004, F.A.C.

R4-4
700-1-11 1 AS
30" X 30"
STA. 52+60

BEGIN
RIGHT TURN LANE
YIELD TO BIKES



SEE SIGNING AND PAVEMENT MARKING PLAN (06)

SEE SIGNING AND PAVEMENT MARKING PLAN (08)

- TYPICAL PAVEMENT MARKING LABEL:
- 1 6" WHITE
 - 2 6" DOUBLE WHITE, 2-4 DOTTED
 - 3 6" WHITE, 2-4 DOTTED
 - 4 12" WHITE
 - 5 18" WHITE @ 10' O.C.
 - 6 24" WHITE
 - 7 6" YELLOW
 - 9 18" YELLOW @ 10' O.C.
 - 10 GREEN BIKE LANE STRIPING, 2-4 DOTTED (TYP.)
 - 12 PAVEMENT MESSAGE (TYP.)
 - 15 6" BLUE (TYP.)
 - 19 24" WHITE PREFORMED THERMOPLASTIC (TYP.)

- TYPICAL PAVEMENT MARKING LABEL:
- 20 6" WHITE W/ W/R RPMs @ 10'
 - 21 6" WHITE W/ W/R RPMs @ 20'
 - 22 6" DOUBLE YELLOW W/ Y/Y RPMs @ 10'
 - 24 REFLECT. YELLOW PAINT
 - 25 6" DOUBLE YELLOW W/ Y/Y RPMs @ 40'
 - 26 6" YELLOW W/ Y/Y RPMs @ 10'
 - 28 6" WHITE @ 3.5' O.C.
 - DELINEATOR, FLEXIBLE TUBULAR @ 40'



REVISIONS			
DATE	DESCRIPTION	DATE	DESCRIPTION
06/15/22	REVISED BUS ISLAND MARKINGS STA. 52+60		
08/04/22	REVISED ADA PARKING		

STEVEN C. BRONZELL, P.E.
P.E. LICENSE NUMBER 76425
BURGESS & NIPLE, INC.
1511 N. WESTSHORE BLVD., SUITE 500
TAMPA, FL 33607

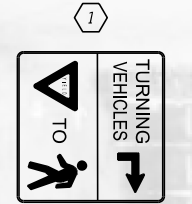
RINGLING BOULEVARD TRAIL - DESIGN / BUILD
PO NO.: PD-221104

CITY OF	COUNTY
SARASOTA	SARASOTA

SIGNING AND PAVEMENT MARKING PLAN (07)

SHEET NO.
S-9

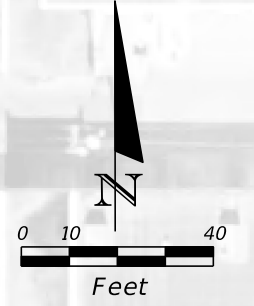
THE OFFICIAL RECORD OF THIS SHEET IS THE ELECTRONIC FILE DIGITALLY SIGNED AND SEALED UNDER RULE 61G15-23.004, F.A.C.



R10-15R
 700-1-11 1 AS
 30" X 30"
 STA. 58+37

- TYPICAL PAVEMENT MARKING LABEL:
- 1 6" WHITE
 - 2 6" DOUBLE WHITE, 2-4 DOTTED
 - 3 6" WHITE, 2-4 DOTTED
 - 4 12" WHITE
 - 5 18" WHITE @ 10' O.C.
 - 6 24" WHITE
 - 9 18" YELLOW @ 10' O.C.
 - 10 GREEN BIKE LANE STRIPING, 2-4 DOTTED (TYP.)
 - 11 GREEN BIKE LANE STRIPING (TYP.)
 - 12 PAVEMENT MESSAGE (TYP.)
 - 13 DIRECTIONAL ARROW (TYP.)
 - 14 DIRECTIONAL BIKE SYMBOL (TYP.)
 - 16 6" DOUBLE WHITE
 - 19 24" WHITE PREFORMED THERMOPLASTIC (TYP.)

- TYPICAL PAVEMENT MARKING LABEL:
- 20 6" WHITE W/ W/R RPMs @ 10'
 - 21 6" WHITE W/ W/R RPMs @ 20'
 - 22 6" DOUBLE YELLOW W/ Y/Y RPMs @ 10'
 - 24 REFLECT. YELLOW PAINT
 - 25 6" DOUBLE YELLOW W/ Y/Y RPMs @ 40'
 - 26 6" YELLOW W/ Y/Y RPMs @ 10'
 - 27 MD/W RPMs ON TOP OF CURB @ 8"
 - DELINEATOR, FLEXIBLE TUBULAR @ 40'

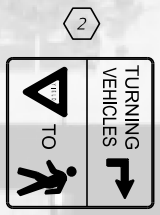


SEE SIGNING AND PAVEMENT MARKING PLAN (07)

SEE SIGNING AND PAVEMENT MARKING PLAN (09)

THE OFFICIAL RECORD OF THIS SHEET IS THE ELECTRONIC FILE DIGITALLY SIGNED AND SEALED UNDER RULE 61G15-23.004, F.A.C.

REVISIONS				STEVEN C. BRONZELL, P.E. P.E. LICENSE NUMBER 76425 BURGESS & NIPLE, INC. 1511 N. WESTSHORE BLVD., SUITE 500 TAMPA, FL 33607	RINGLING BOULEVARD TRAIL - DESIGN / BUILD PO NO.: PD-221104		SIGNING AND PAVEMENT MARKING PLAN (08)	SHEET NO. S-10
DATE	DESCRIPTION	DATE	DESCRIPTION		CITY OF	COUNTY		
					SARASOTA	SARASOTA		

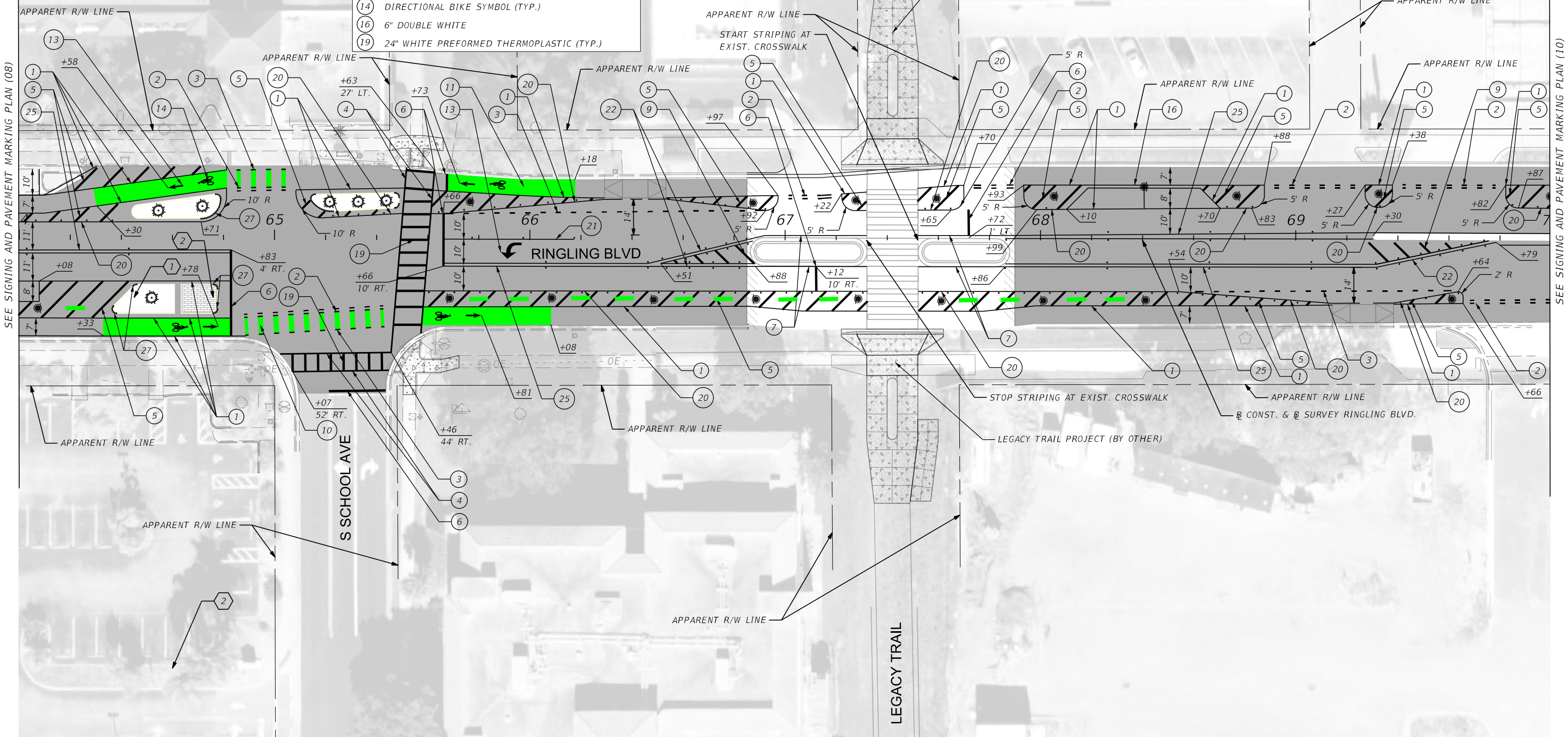
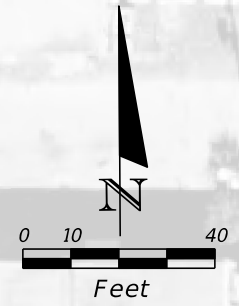


W11-1
24" x 24"
STA. 64+45

R10-15R
30" X 30"
STA. 64+76

- TYPICAL PAVEMENT MARKING LABEL:
- 1 6" WHITE
 - 2 6" DOUBLE WHITE, 2-4 DOTTED
 - 3 6" WHITE, 2-4 DOTTED
 - 4 12" WHITE
 - 5 18" WHITE @ 10' O.C.
 - 6 24" WHITE
 - 7 6" YELLOW
 - 9 18" YELLOW @ 10' O.C.
 - 10 GREEN BIKE LANE STRIPING, 2-4 DOTTED (TYP.)
 - 11 GREEN BIKE LANE STRIPING (TYP.)
 - 13 DIRECTIONAL ARROW (TYP.)
 - 14 DIRECTIONAL BIKE SYMBOL (TYP.)
 - 16 6" DOUBLE WHITE
 - 19 24" WHITE PREFORMED THERMOPLASTIC (TYP.)

- TYPICAL PAVEMENT MARKING LABEL:
- 20 6" WHITE W/ W/R RPMs @ 10'
 - 21 6" WHITE W/ W/R RPMs @ 20'
 - 22 6" DOUBLE YELLOW W/ Y/Y RPMs @ 10'
 - 24 REFLECT. YELLOW PAINT
 - 25 6" DOUBLE YELLOW W/ Y/Y RPMs @ 40'
 - 26 6" YELLOW W/ Y/Y RPMs @ 10'
 - 27 MD/W RPMs ON TOP OF CURB @ 8"
 - DELINEATOR, FLEXIBLE TUBULAR @ 40'



SEE SIGNING AND PAVEMENT MARKING PLAN (08)

SEE SIGNING AND PAVEMENT MARKING PLAN (10)

THE OFFICIAL RECORD OF THIS SHEET IS THE ELECTRONIC FILE DIGITALLY SIGNED AND SEALED UNDER RULE 61G15-23.004, F.A.C.

REVISIONS			
DATE	DESCRIPTION	DATE	DESCRIPTION

STEVEN C. BRONZELL, P.E.
P.E. LICENSE NUMBER 76425
BURGESS & NIPLE, INC.
1511 N. WESTSHORE BLVD., SUITE 500
TAMPA, FL 33607

RINGLING BOULEVARD TRAIL - DESIGN / BUILD PO NO.: PD-221104	
CITY OF	COUNTY
SARASOTA	SARASOTA

**SIGNING AND PAVEMENT
MARKING PLAN (09)**

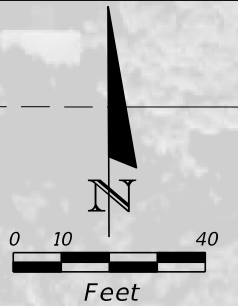
SHEET NO.
S-11

TYPICAL PAVEMENT MARKING LABEL:

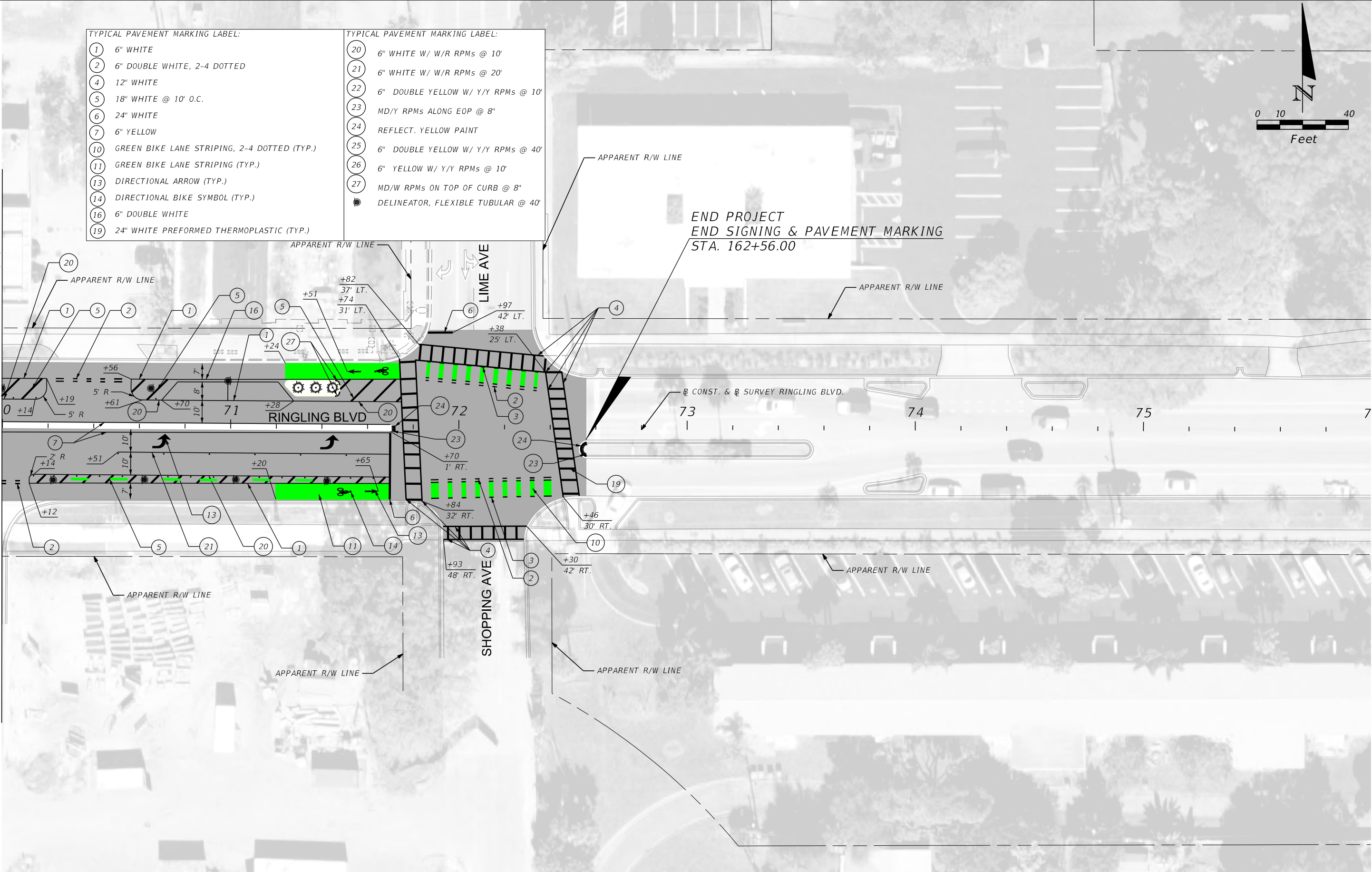
- ① 6" WHITE
- ② 6" DOUBLE WHITE, 2-4 DOTTED
- ④ 12" WHITE
- ⑤ 18" WHITE @ 10' O.C.
- ⑥ 24" WHITE
- ⑦ 6" YELLOW
- ⑩ GREEN BIKE LANE STRIPING, 2-4 DOTTED (TYP.)
- ⑪ GREEN BIKE LANE STRIPING (TYP.)
- ⑬ DIRECTIONAL ARROW (TYP.)
- ⑭ DIRECTIONAL BIKE SYMBOL (TYP.)
- ⑯ 6" DOUBLE WHITE
- ⑰ 24" WHITE PREFORMED THERMOPLASTIC (TYP.)

TYPICAL PAVEMENT MARKING LABEL:

- ⑳ 6" WHITE W/ W/R RPMs @ 10'
- ㉑ 6" WHITE W/ W/R RPMs @ 20'
- ㉒ 6" DOUBLE YELLOW W/ Y/Y RPMs @ 10'
- ㉓ MD/Y RPMs ALONG EOP @ 8"
- ㉔ REFLECT. YELLOW PAINT
- ㉕ 6" DOUBLE YELLOW W/ Y/Y RPMs @ 40'
- ㉖ 6" YELLOW W/ Y/Y RPMs @ 10'
- ㉗ MD/W RPMs ON TOP OF CURB @ 8"
- DELINEATOR, FLEXIBLE TUBULAR @ 40'



SEE SIGNING AND PAVEMENT MARKING PLAN (09)



REVISIONS			
DATE	DESCRIPTION	DATE	DESCRIPTION

STEVEN C. BRONZELL, P.E.
 P.E. LICENSE NUMBER 76425
 BURGESS & NIPLE, INC.
 1511 N. WESTSHORE BLVD., SUITE 500
 TAMPA, FL 33607

RINGLING BOULEVARD TRAIL - DESIGN / BUILD PO NO.: PD-221104	
CITY OF	COUNTY
SARASOTA	SARASOTA

**SIGNING AND PAVEMENT
MARKING PLAN (10)**

SHEET NO.
S-12