

The Bay Recreational Area

Section 4(f) Determination of Applicability

Facility Type: Recreational Area

Property Classification: Park/Recreational Area

Address and Coordinates:

Address: 655 N Tamiami Trail, Sarasota, FL 34236

Latitude: 27.341667 Longitude: - 82.547222

Description of Property:

The Bay (Bayfront Community Center Park and Sarasota Lawn Bowling Club) is a 30.624-acre recreational park located in Sarasota, Florida. It is bounded by Boulevard of the Arts (BoTA) on the south, US 41/Tamiami Trail on the east, 10th Street on the north, and Sarasota Bay on the west (see **Figure 1**). The Bay provides the public with opportunities for wildlife/bird watching, recreational activities, bicycling, paddling and social events. Existing amenities within the park (shown in **Figure 2**) include an Americans with Disabilities (ADA)-accessible boat dock, canoe/kayak rental services, playground, paved trails, social event venues and multiple resting, environmental and decorative artwork facilities. The Bay occurs on City of Sarasota-owned properties adjacent to the western third of the Boulevard of the Arts project segment.

Owner/ Official with Jurisdiction: City of Sarasota

Relationship Between Property and the Project

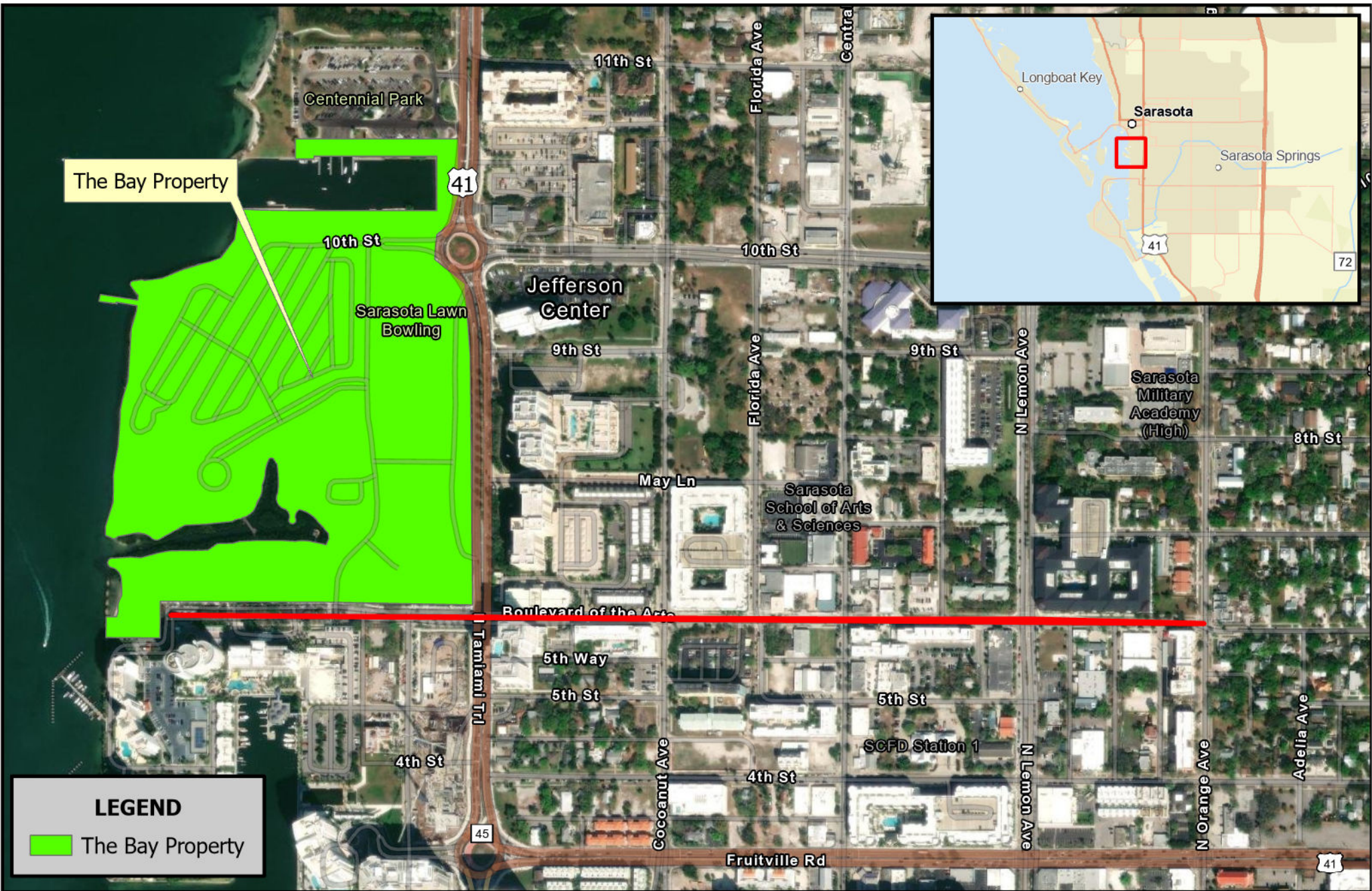
A portion of the proposed BoTA roadway improvements will occur along the south side of The Bay. The proposed improvements (which include sidewalk widening along the south side of the street, curb extensions at key intersections, drainage and stormwater capacity improvements, shade/canopy trees, hardscaping, enhanced landscaping, a mobility hub, and replacement of aerial utilities with subterranean alignments) will occur entirely within City-owned roadway right-of-way (ROW) and will require no ROW use or acquisition from The Bay property. There will be no occupation of this resource on a temporary or permanent basis, and no proximity impacts to this resource. Although the project will be constructed by the City of Sarasota and/or their contractor, construction activities will be consistent with the FDOT's *Standard Specifications for Roadway and Bridge Construction*, including the maintenance of public access to/use of The Bay throughout construction.

Yes No

X Will the property be "used" within the meaning of Section 4(f)?

Recommended Outcome: No Use

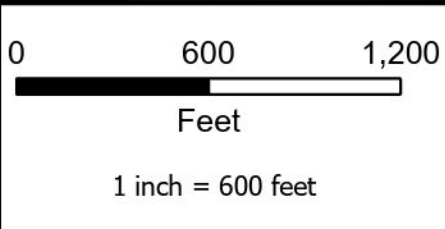
OEM SME Determination Date: *TBD*



The Bay Property

LEGEND

The Bay Property



**Figure 1:
The Bay
Location Map**

**City of Sarasota
Boulevard of the Arts Complete Streets
Sarasota County, Florida**

Source:
ESRI Imagery, 2023
FDEP Office of Greenways
and Trails, 2021



Figure 2: Existing Amenities

