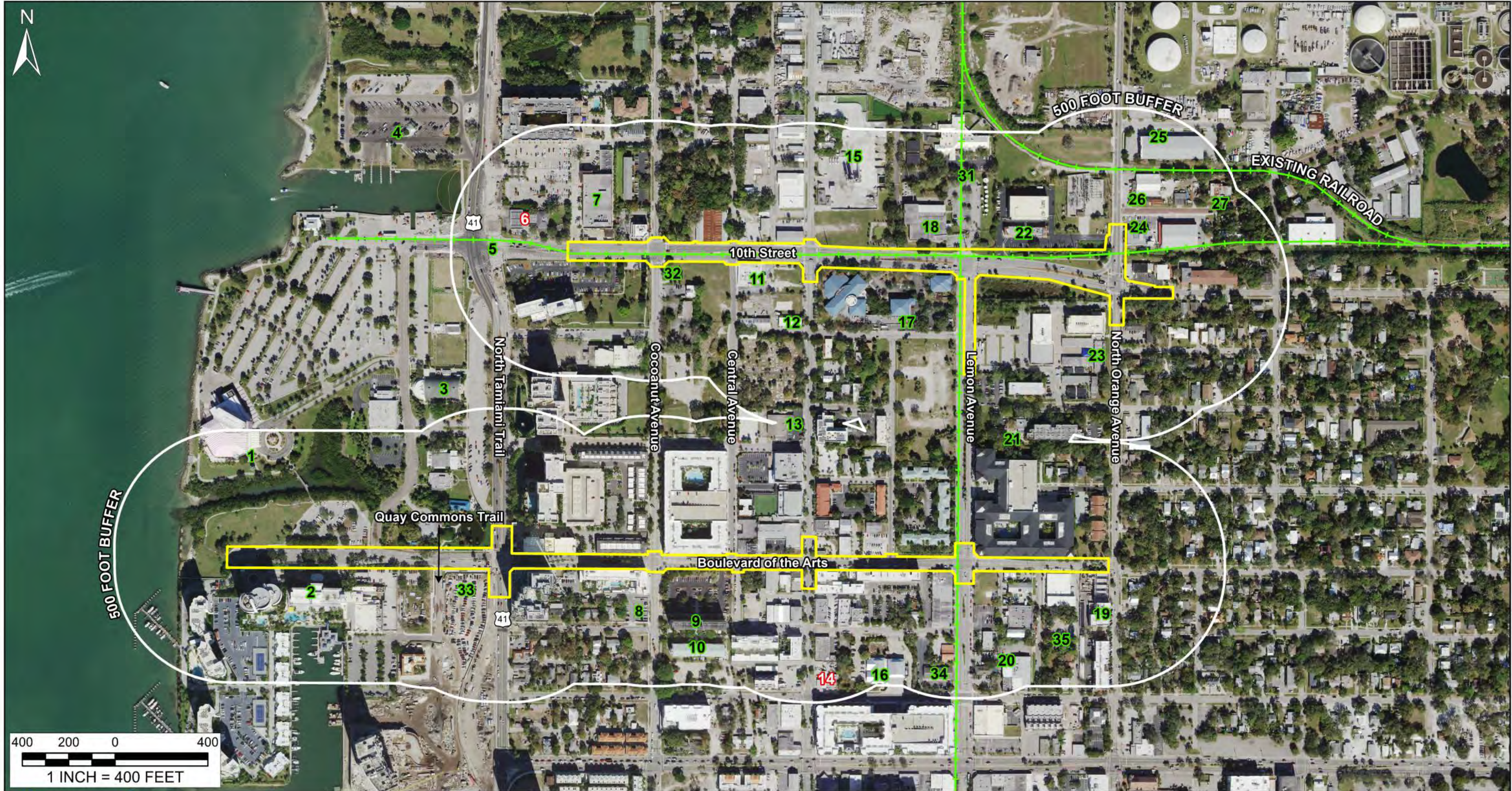


## **APPENDIX A – CONTAMINATION SITE MAP**





## Contamination Site Map

### 10th Street and Boulevard of the Arts

Sarasota County, Florida  
 RK&K Project No.: 23120.001  
 Tierra Project No.: 6511-23-007-001E

Sheet No.	
1	

University of South Florida, Manatee County Government, Sarasota County GIS, FDEP, Esri, TomTom, Garmin, SafeGraph, METI/NASA, USGS, EPA, NPS, USDA, USFWS

#### LEGEND

- MAINLINE CORRIDOR
- FORMER/EXISTING RAILROAD  
FORMER (MAP ID 29, 30) - EXISTING (MAP ID 28)
- MAP ID NO/LOW RATED SITES
- MAP ID MEDIUM/HIGH RATED SITES



## **APPENDIX B – AERIAL PHOTOGRAPHS**

# Historical Aerial Photograph Report

## Subject Property:

Boulevard of the Arts  
and 10th Street  
Sarasota, Florida

## Prepared For:

Tierra Inc  
7351 Temple Terrace Hwy  
Tampa, FL 33637

## Prepared By:



Environmental Data Management, Inc.  
2840 West Bay Drive, Suite 208  
Belleair Bluffs, Florida 33770

December 26, 2023



Environmental Data Management, Inc.  
2840 West Bay Drive, Suite 208  
Belleair Bluffs, Florida 33770  
(727) 586-1700  
<http://www.edm-net.com>

---

December 26, 2023

Collin Duncan  
Tierra Inc  
7351 Temple Terrace Hwy  
Tampa, FL 33637

Subject: **Historical Aerial Photos-- EDM Project #: 26768**  
**Client Project# FPID No.: N/A**

Dear Mr. Duncan:

Thank you for choosing Environmental Data Management, Inc. The following report contains a series of Historical Aerial Photographic images for the following location:

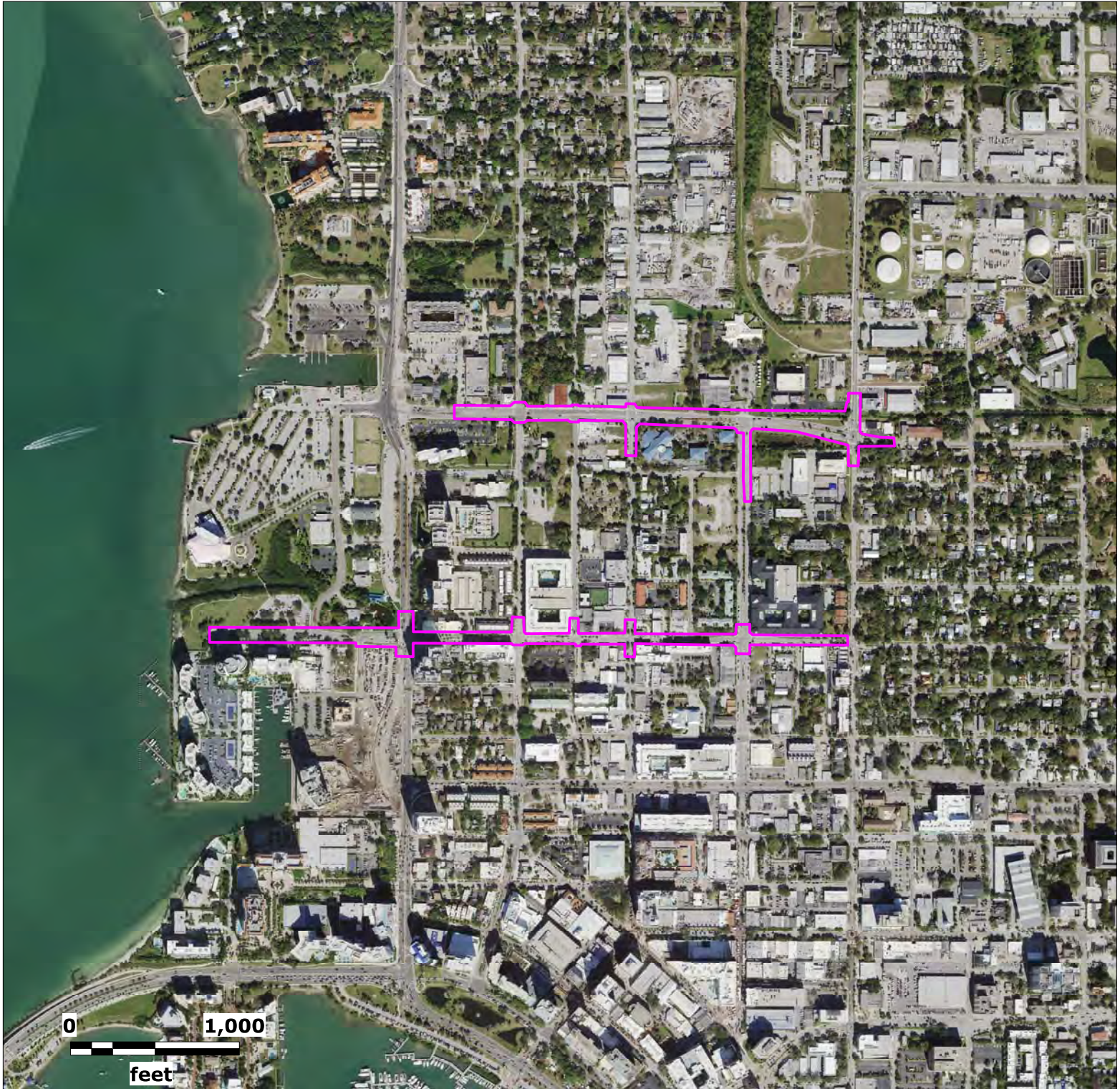
**Boulevard of the Arts  
and 10th Street  
Sarasota, Florida**

These images were selected to provide you with an aerial photographic record of this location at approximate ten year intervals and/or one photograph per decade, where available.

Should you have any questions regarding this report or our service, please feel free to contact us. We appreciate the opportunity to be of service to you and look forward to working with you in the future.

**ENVIRONMENTAL DATA MANAGEMENT, INC.**





Source: Florida Department of Transportation

Map Scale and Property Boundaries are Approximate

### Subject Property

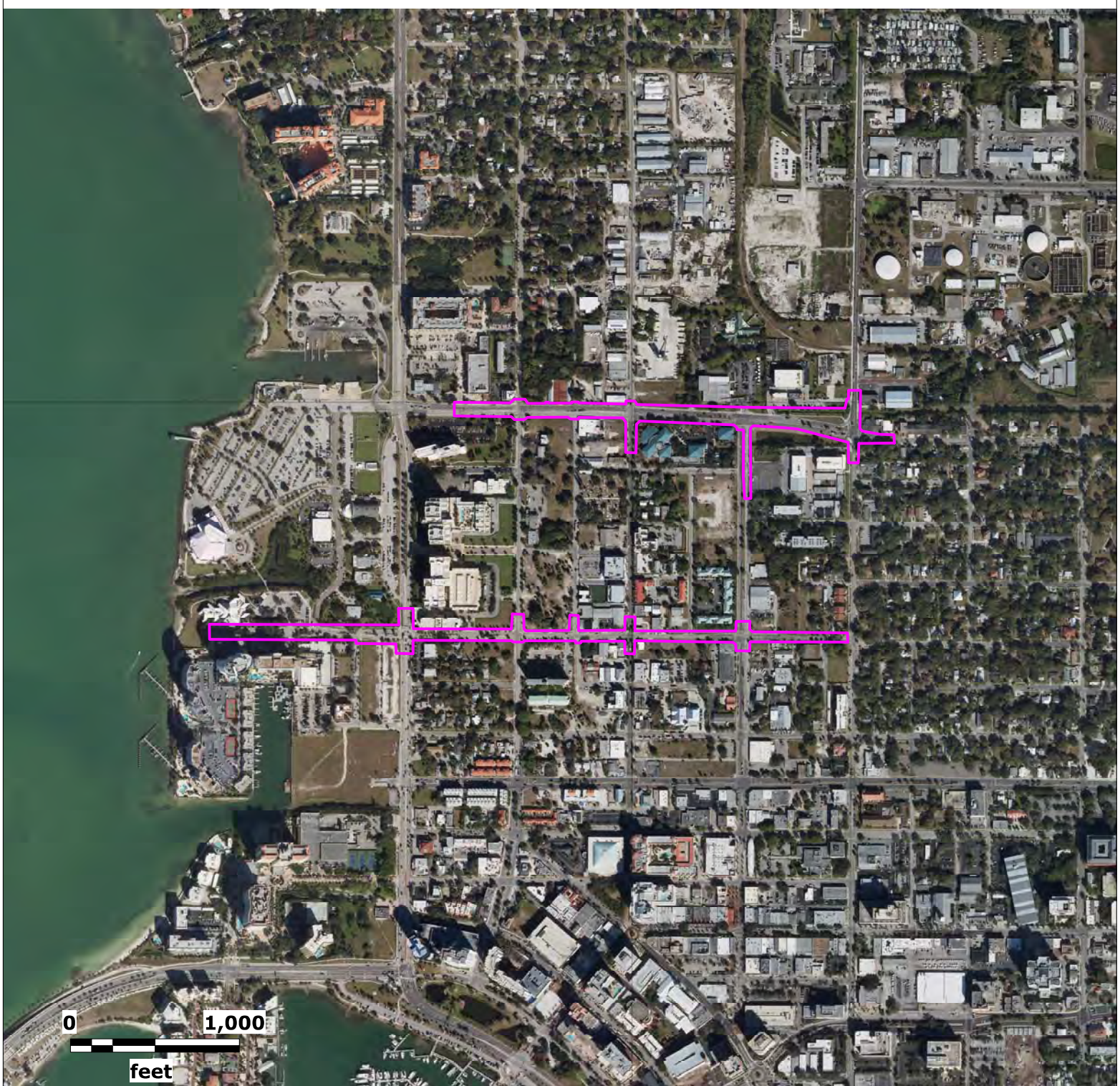
Boulevard of the Arts  
and 10th Street  
Sarasota, Florida

Lat (DMS): 27 20' 28.8132"  
Lon (DMS): -82 32' 40.3764"

EDM Job No: 26768  
December 24, 2023

 Approximate Site Location





Source: Florida Department of Transportation


Map Scale and Property Boundaries are Approximate

### Subject Property

Boulevard of the Arts  
and 10th Street  
Sarasota, Florida

Lat (DMS): 27 20' 28.8132"  
Lon (DMS): -82 32' 40.3764"

EDM Job No: 26768  
December 24, 2023

 Approximate Site Location





Source: Florida Department of Transportation


Map Scale and Property Boundaries are Approximate

**Subject Property**

Boulevard of the Arts  
and 10th Street  
Sarasota, Florida

Lat (DMS): 27 20' 28.8132"  
Lon (DMS): -82 32' 40.3764"

EDM Job No: 26768  
December 24, 2023

 Approximate Site Location





Source: Florida Department of Transportation

Map Scale and Property Boundaries are Approximate

### Subject Property

Boulevard of the Arts  
and 10th Street  
Sarasota, Florida

Lat (DMS): 27 20' 28.8132"  
Lon (DMS): -82 32' 40.3764"

EDM Job No: 26768  
December 24, 2023

 Approximate Site Location





Source: Florida Department of Transportation

Map Scale and Property Boundaries are Approximate

**Subject Property**

Boulevard of the Arts  
and 10th Street  
Sarasota, Florida

Lat (DMS): 27 20' 28.8132"  
Lon (DMS): -82 32' 40.3764"

EDM Job No: 26768  
December 24, 2023

 Approximate Site Location





Source: Florida Department of Transportation


Map Scale and Property Boundaries are Approximate

**Subject Property**

Boulevard of the Arts  
and 10th Street  
Sarasota, Florida

Lat (DMS): 27 20' 28.8132"  
Lon (DMS): -82 32' 40.3764"

EDM Job No: 26768  
December 24, 2023

 Approximate Site Location





Source: Florida Department of Transportation

Map Scale and Property Boundaries are Approximate

**Subject Property**

Boulevard of the Arts  
and 10th Street  
Sarasota, Florida

Lat (DMS): 27 20' 28.8132"  
Lon (DMS): -82 32' 40.3764"

EDM Job No: 26768  
December 24, 2023

 Approximate Site Location





Source: USGS Single Frame Collection

Map Scale and Property Boundaries are Approximate

**Subject Property**

Boulevard of the Arts  
and 10th Street  
Sarasota, Florida

Lat (DMS): 27 20' 28.8132"  
Lon (DMS): -82 32' 40.3764"

EDM Job No: 26768  
December 24, 2023

 Approximate Site Location





Source: University of Florida

Map Scale and Property Boundaries are Approximate

**Subject Property**

Boulevard of the Arts  
and 10th Street  
Sarasota, Florida

Lat (DMS): 27 20' 28.8132"  
Lon (DMS): -82 32' 40.3764"

EDM Job No: 26768  
December 24, 2023

 Approximate Site Location





Source: University of Florida


Map Scale and Property Boundaries are Approximate

**Subject Property**

Boulevard of the Arts  
and 10th Street  
Sarasota, Florida

Lat (DMS): 27 20' 28.8132"  
Lon (DMS): -82 32' 40.3764"

EDM Job No: 26768  
December 24, 2023

 Approximate Site Location



## **APPENDIX C – TOPGRAPHIC MAPS**



# Historical Topographic Map Report

## Subject Property:

Boulevard of the Arts  
and 10th Street  
Sarasota, Florida  
St Petersburg Quadrangle

## Prepared For:

Tierra Inc  
7351 Temple Terrace Hwy  
Tampa, FL 33637

## Prepared By:



Environmental Data Management, Inc.  
2840 West Bay Drive, Suite 208  
Belleair Bluffs, Florida 33770

December 26, 2023





Environmental Data Management, Inc.  
2840 West Bay Drive, Suite 208  
Belleair Bluffs, Florida 33770  
(727) 586-1700  
<http://www.edm-net.com>

---

December 26, 2023

Collin Duncan  
Tierra Inc  
7351 Temple Terrace Hwy  
Tampa, FL 33637

Subject: **Historical Topographic Maps-- EDM Project #: 26768**  
**Client Project #: FPID No.: N/A**

Dear Mr. Duncan:

Thank you for choosing Environmental Data Management, Inc. The following report contains a series of Historical Topographic Maps for the following location:

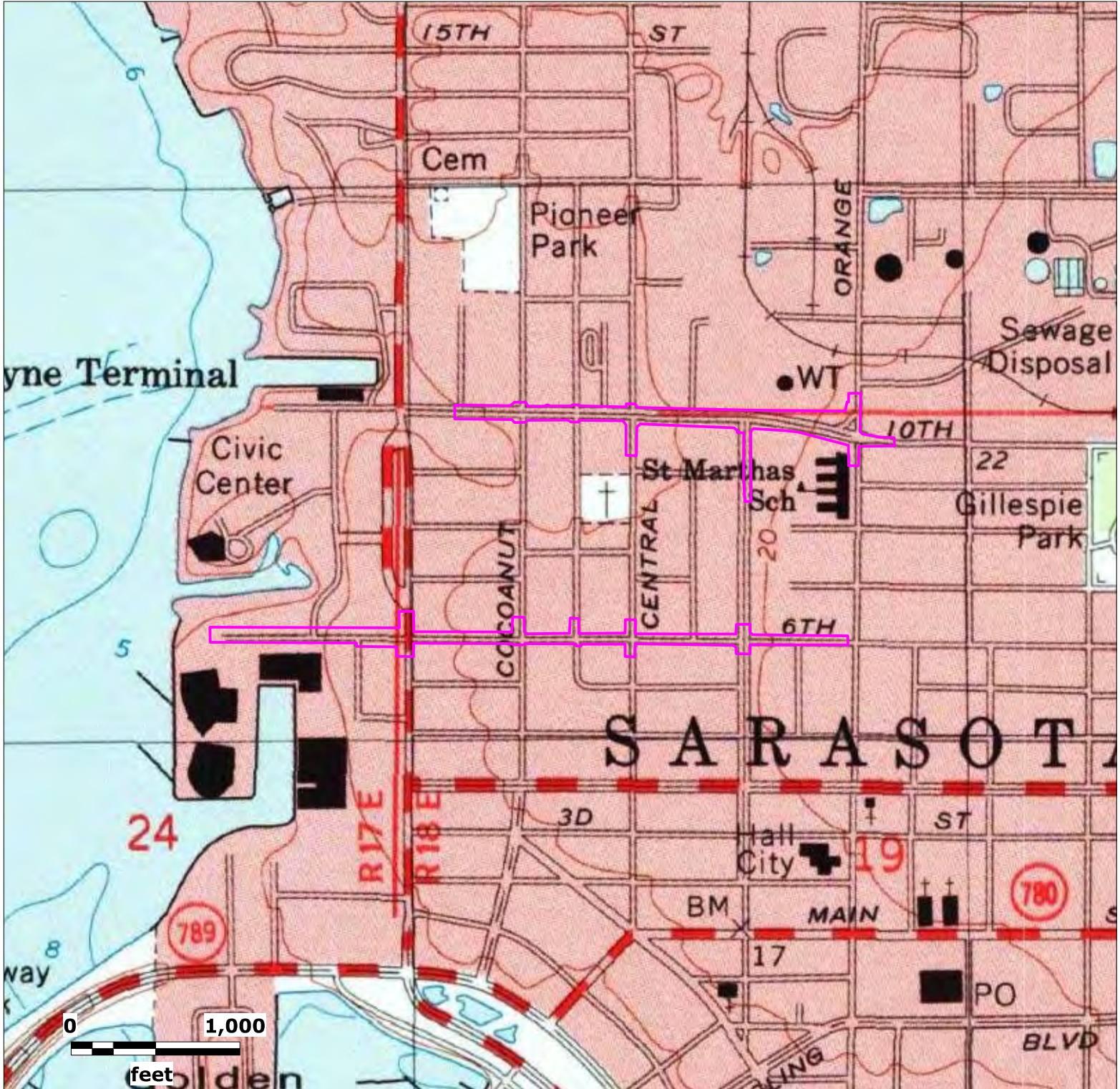
**Boulevard of the Arts  
and 10th Street  
Sarasota, Florida  
St Petersburg Quadrangle**

These maps were obtained from the digital map collections of the US Geological Survey. Only 7.5 Minute Series maps were selected for this report.

Should you have any questions regarding this report or our service, please feel free to contact us. We appreciate the opportunity to be of service to you and look forward to working with you in the future.

**ENVIRONMENTAL DATA MANAGEMENT, INC.**





Source: USGS Historical Topographic Map Collection

Map Scale and Property Boundaries are Approximate

### Subject Property

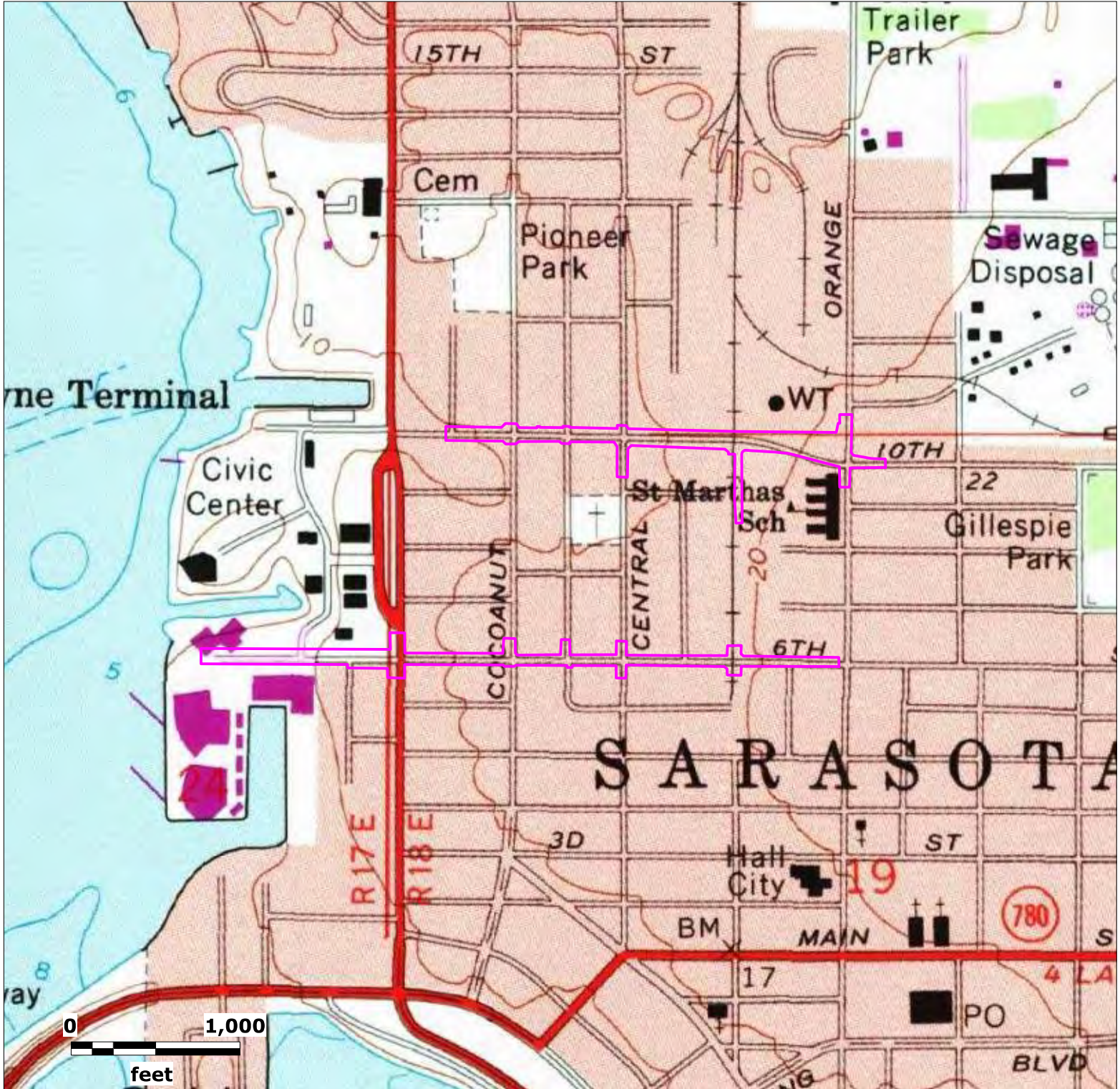
Boulevard of the Arts  
and 10th Street  
Sarasota, Florida

Lat (DMS): 27 20' 28.8132"  
Lon (DMS): -82 32' 40.3764"

EDM Job No: 26768  
December 24, 2023

Approximate Site Location





Source: USGS Historical Topographic Map Collection

Map Scale and Property Boundaries are Approximate

### Subject Property

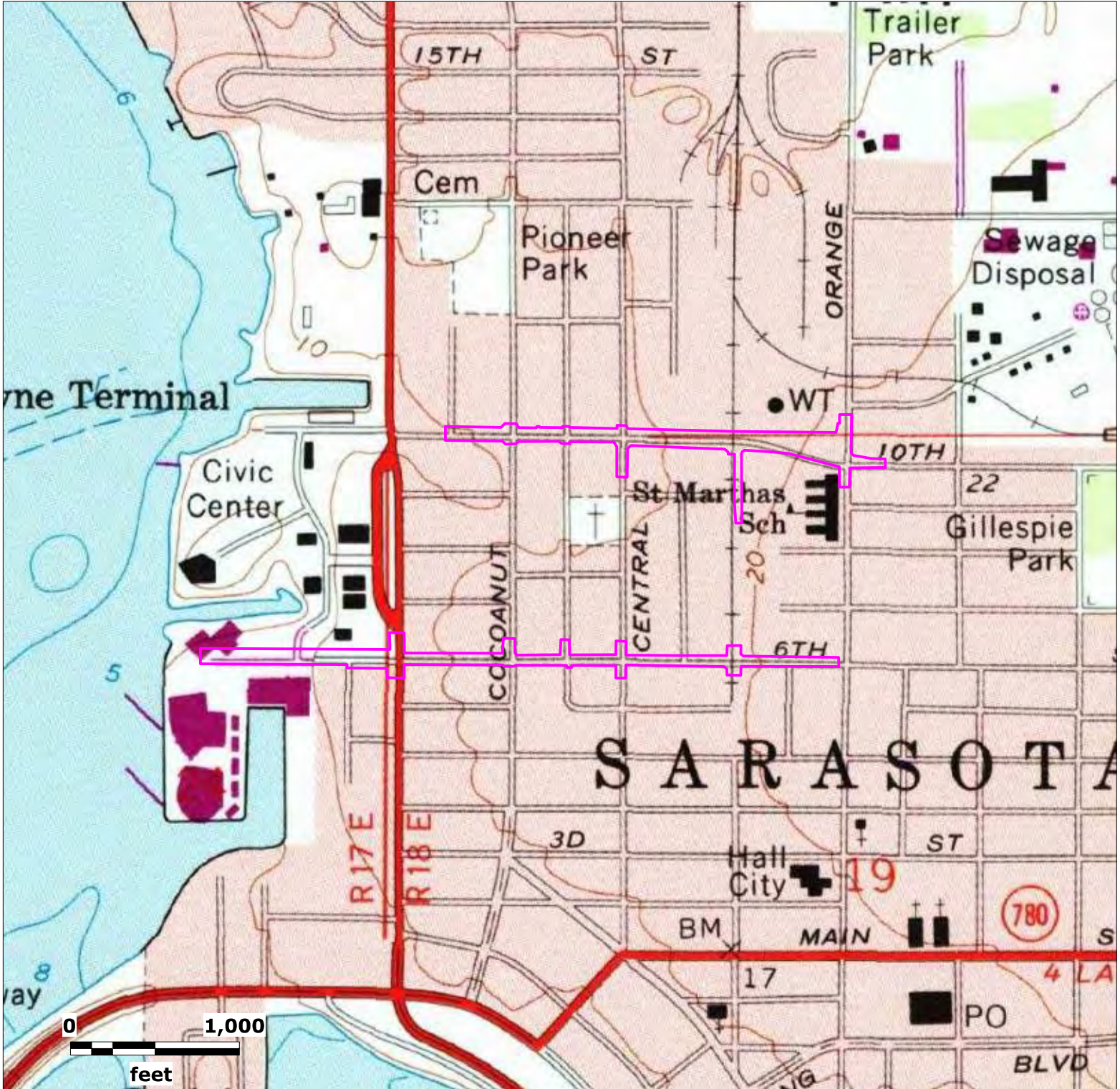
Boulevard of the Arts  
and 10th Street  
Sarasota, Florida

Lat (DMS): 27 20' 28.8132"  
Lon (DMS): -82 32' 40.3764"

EDM Job No: 26768  
December 24, 2023

Approximate Site Location





Source: USGS Historical Topographic Map Collection

Map Scale and Property Boundaries are Approximate

**Subject Property**

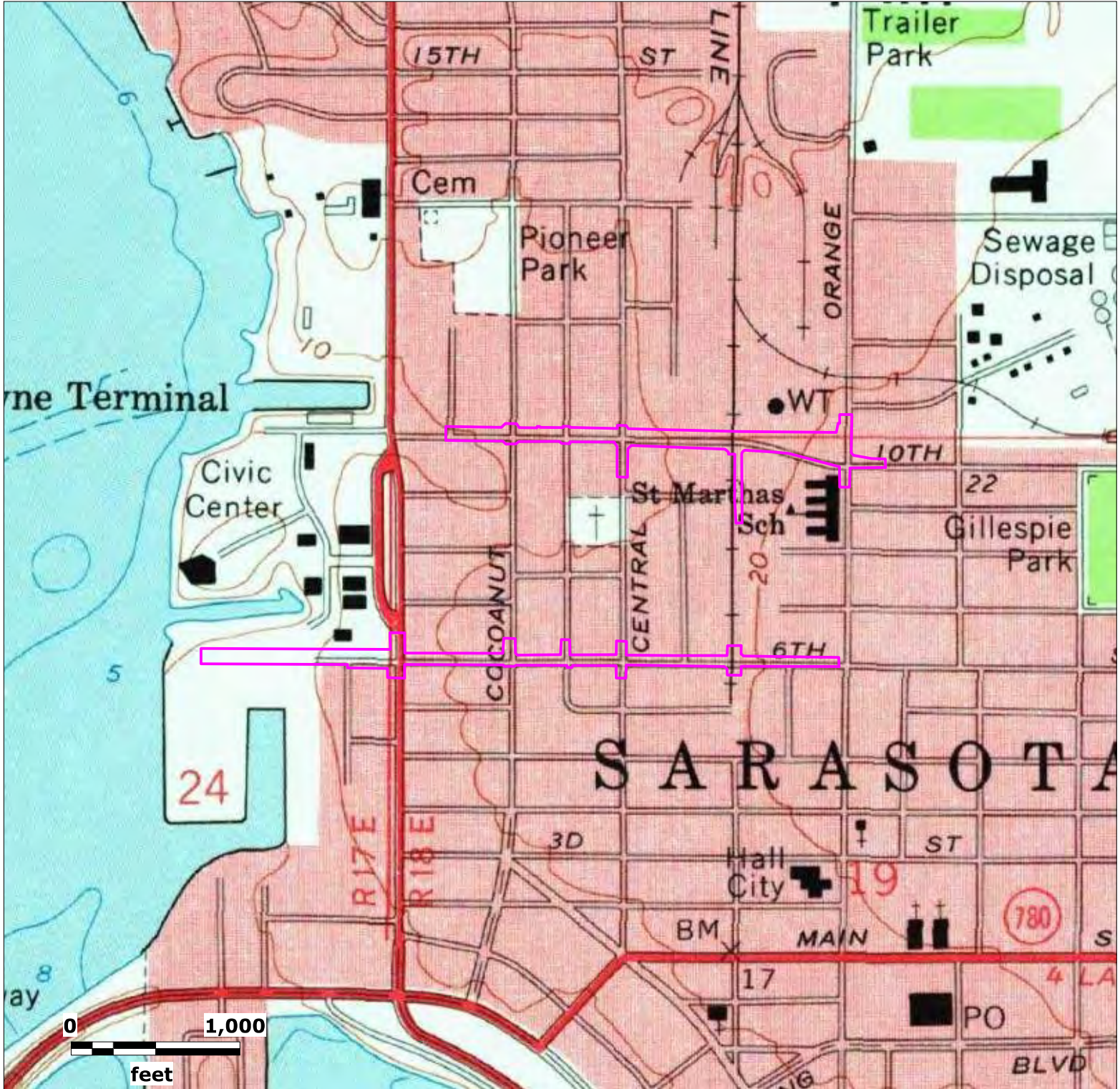
Boulevard of the Arts  
and 10th Street  
Sarasota, Florida

Lat (DMS): 27 20' 28.8132"  
Lon (DMS): -82 32' 40.3764"

EDM Job No: 26768  
December 24, 2023

Approximate Site Location





Source: USGS Historical Topographic Map Collection

Map Scale and Property Boundaries are Approximate

**Subject Property**

Boulevard of the Arts  
and 10th Street  
Sarasota, Florida

Lat (DMS): 27 20' 28.8132"  
Lon (DMS): -82 32' 40.3764"

EDM Job No: 26768  
December 24, 2023

 Approximate Site Location





Source: USGS Historical Topographic Map Collection

Map Scale and Property Boundaries are Approximate

### Subject Property

Boulevard of the Arts  
and 10th Street  
Sarasota, Florida

Lat (DMS): 27 20' 28.8132"  
Lon (DMS): -82 32' 40.3764"

EDM Job No: 26768  
December 24, 2023

 Approximate Site Location