

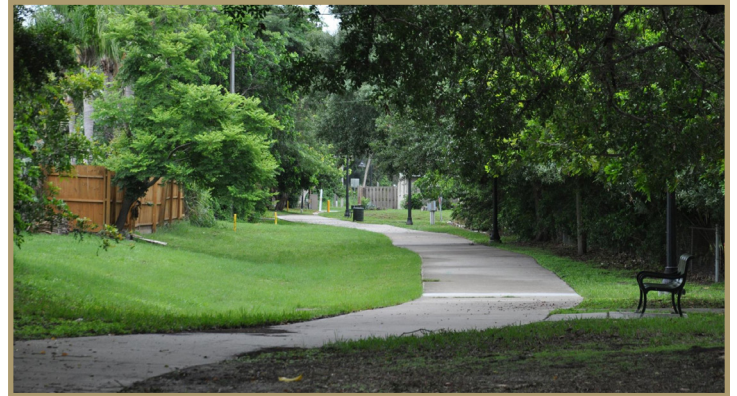
School Avenue Greenway Extension



Purpose

The City of Sarasota is exploring the best way to extend the School Avenue Greenway north from Webber Street to Datura Street.

We are looking at which methods are technically feasible, and the community is helping us determine which methods would best suit the local character and everyone's needs to get around Sarasota safely.



A greenway is a path for people on foot or bike to use for transportation or recreation. A greenway's design is flexible. Typically, greenways are separated from roads, they can be paved or unpaved, and there is often an emphasis on vegetation and greenery.

Study Area

The City of Sarasota currently has...



28 miles of bike lanes

7 miles of *planned* bike lanes



7 miles of multi-use paths/greenways

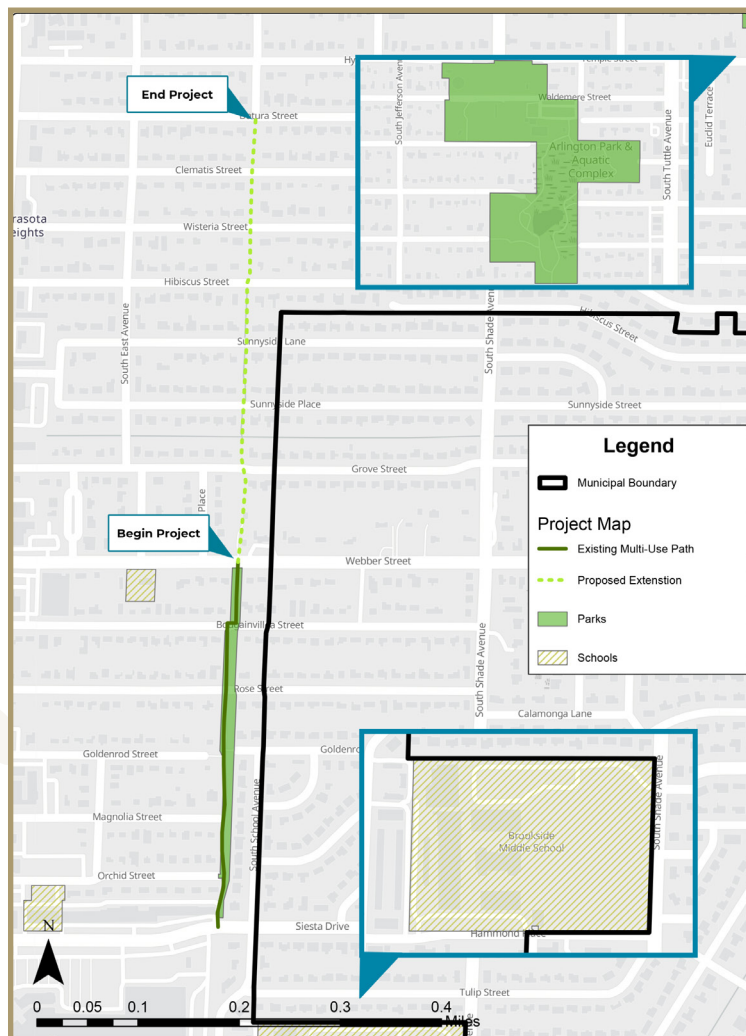
14 miles of *planned* multi-use paths/greenways



8 miles of *planned* Complete Streets



24 miles of *planned* shared lane markings



Stay up to date and visit the project website to see new materials and opportunities to be involved

bit.ly/schoolavenue

School Avenue Greenway Extension



Safety

This is a more comfortable and safer alternative to US 41. There have been **85** crashes with people on foot or on bike in the last five years in the 1/2 mile around the School Avenue Greenway and the proposed extension.

Destinations

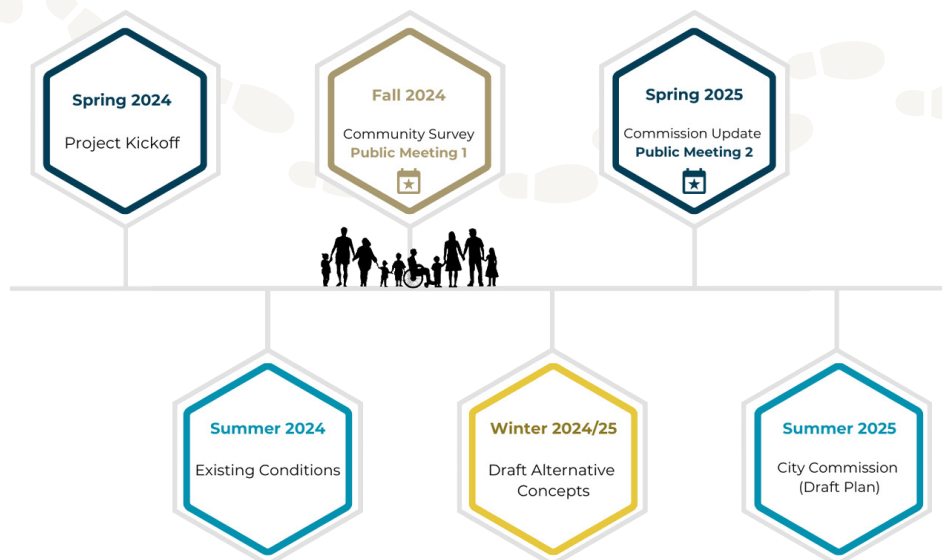
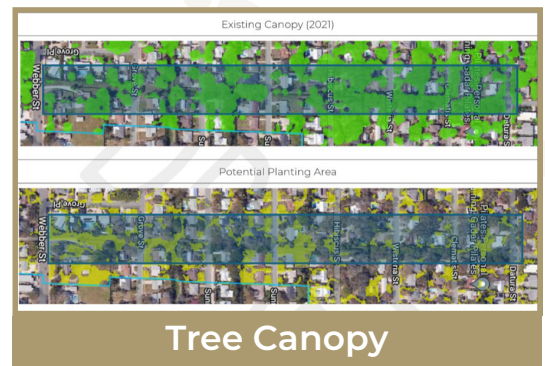
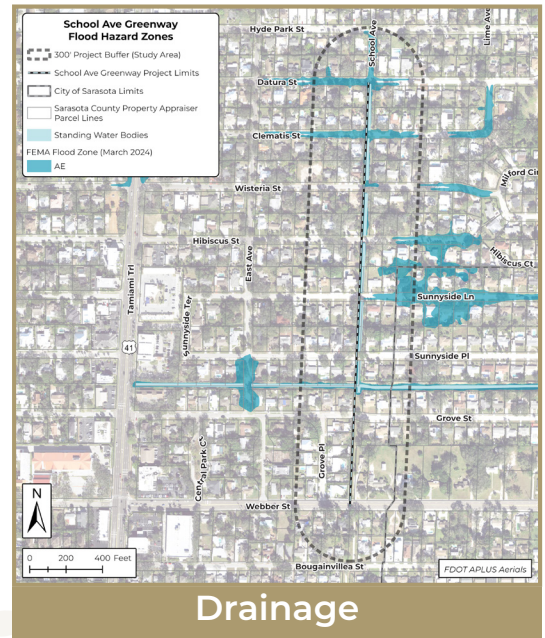
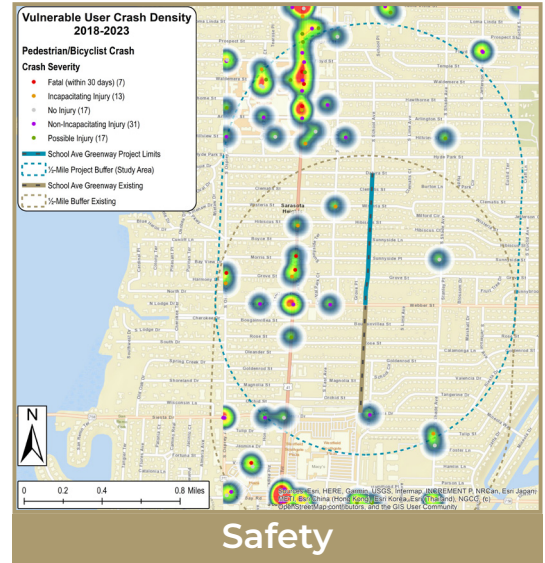
An extended School Avenue greenway provides better connections to destinations like Arlington Park, Sarasota Memorial Hospital, supermarkets, and schools like Southside and Alta Vista Elementary Schools, Brookside Middle School, and Sarasota High School. In addition to students and errand-runners, many people work at these destinations.

Drainage

The easement is used to help with stormwater drainage, and this trait can be preserved and enhanced.

Tree Canopy

The current tree canopy is valuable and is a neighborhood-wide benefit. We can identify public lands where trees can be planted to either increase the native canopy or mitigate any losses resulting from the greenway extension's construction. This is also an opportunity to remove any harmful invasive species.



- Approximate Study Area
- Existing Canopy (2021)
- Potential Planting Area (Natives)